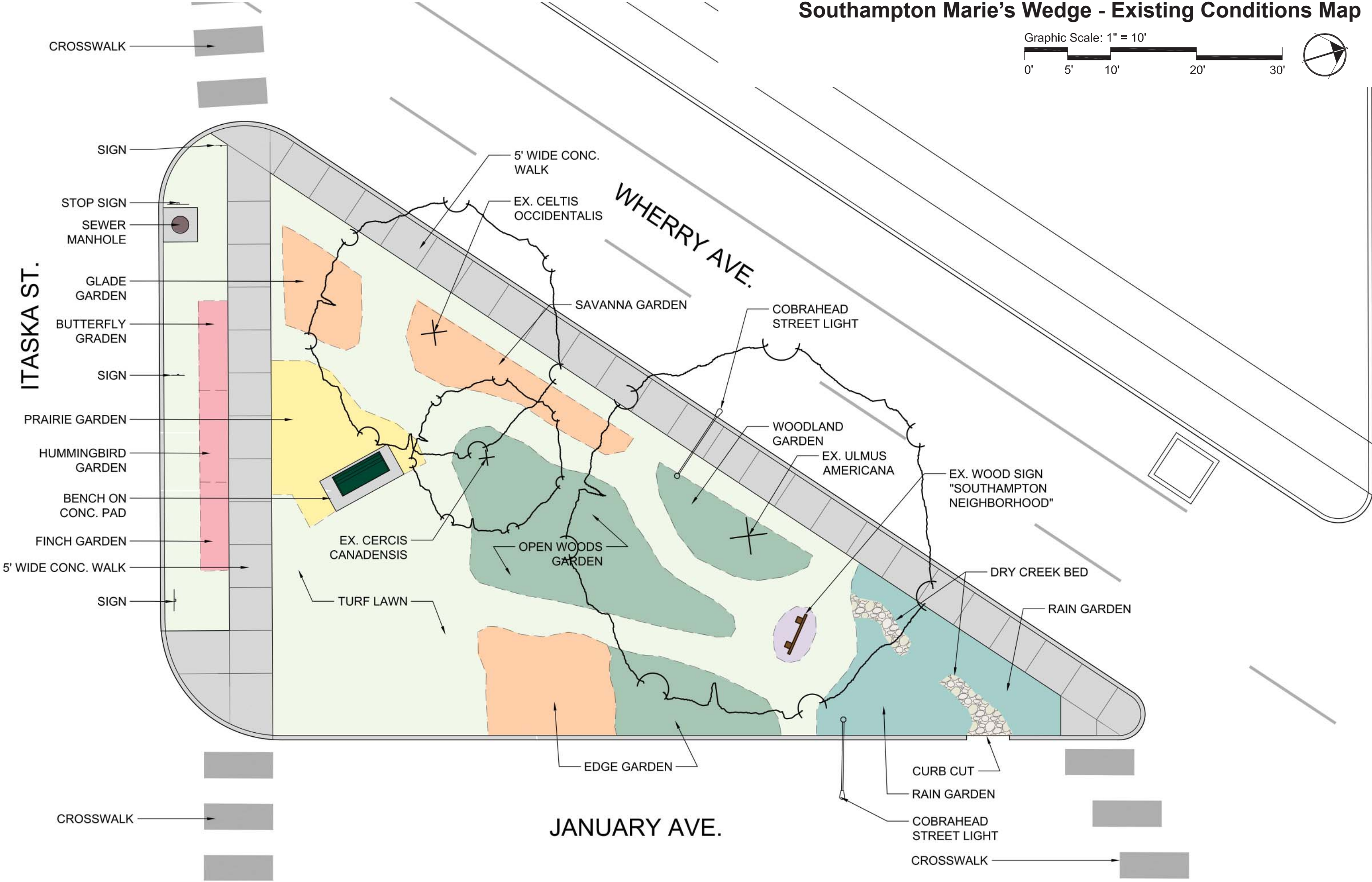


Southampton Marie's Wedge - Existing Conditions Map



ITASKA ST.

WHERRY AVE.

JANUARY AVE.

CROSSWALK

SIGN

STOP SIGN

SEWER
MANHOLE

GLADE
GARDEN

BUTTERFLY
GRADEN

SIGN

PRAIRIE GARDEN

HUMMINGBIRD
GARDEN

BENCH ON
CONC. PAD

FINCH GARDEN

5' WIDE CONC. WALK

SIGN

TURF LAWN

EX. CERCIS
CANADENSIS

OPEN WOODS
GARDEN

EDGE GARDEN

SAVANNA GARDEN

5' WIDE CONC.
WALK

EX. CELTIS
OCCIDENTALIS

WOODLAND
GARDEN

EX. ULMUS
AMERICANA

EX. WOOD SIGN
"SOUTHAMPTON
NEIGHBORHOOD"

DRY CREEK BED

RAIN GARDEN

CURB CUT

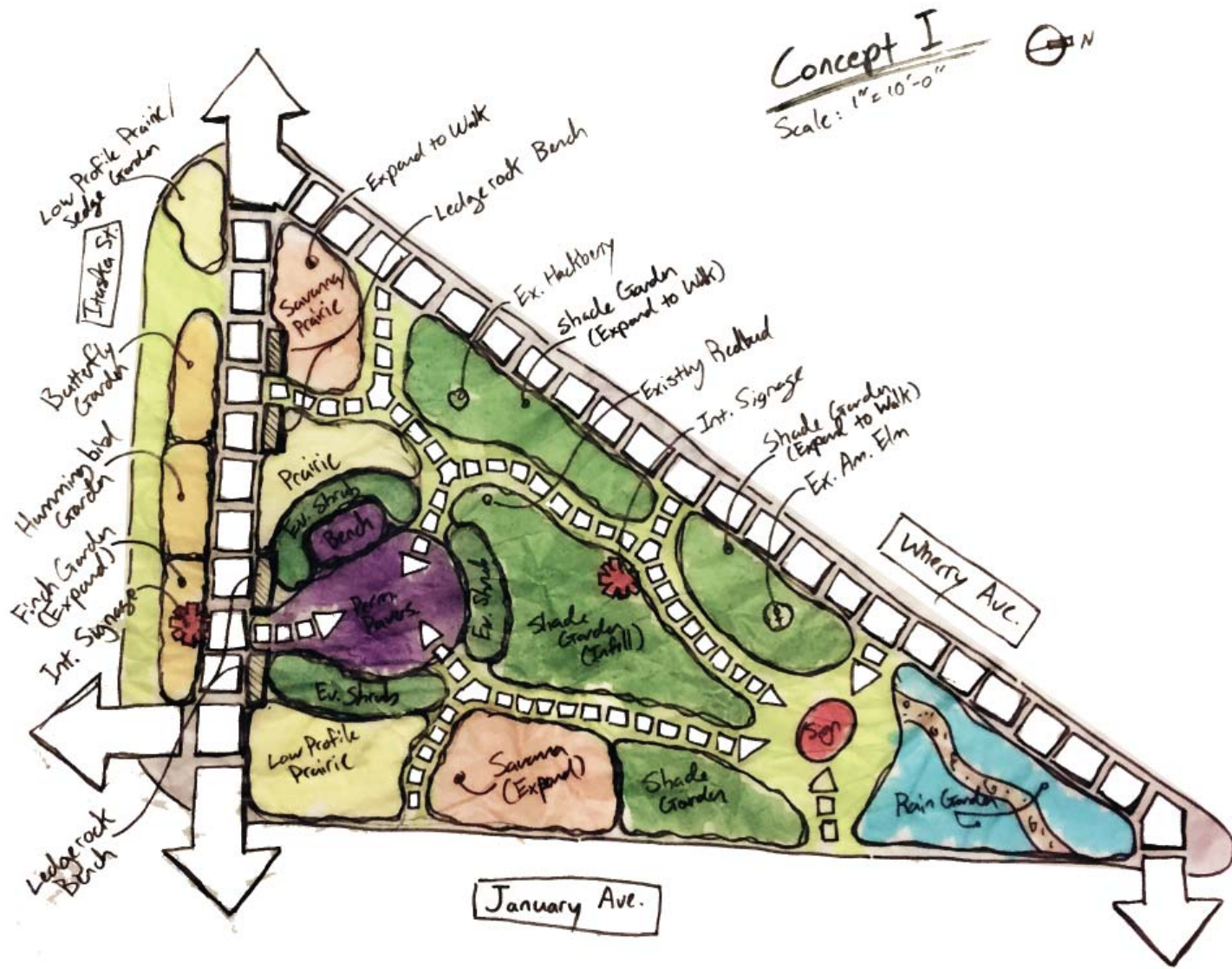
RAIN GARDEN

COBRAHEAD
STREET LIGHT

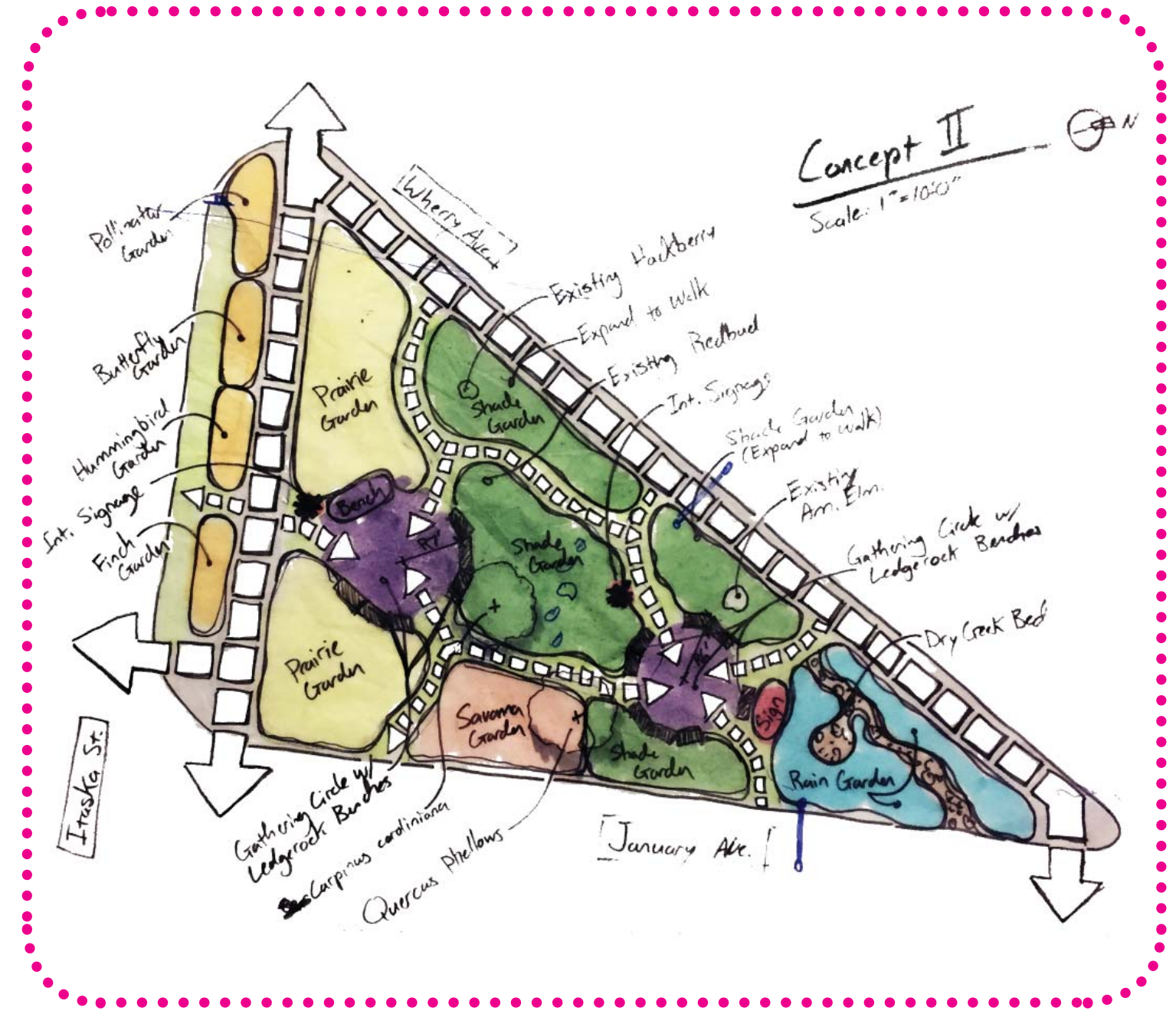
CROSSWALK

CROSSWALK

Southampton Marie's Wedge - Initial Concepts



PREFERRED CONCEPT ALTERNATIVE



Southampton Marie's Wedge - Overall Master Plan

Graphic Scale: 1" = 10'



ITASKA ST.

WHERRY AVE.

JANUARY AVE.

PRAIRIE/ GLADE GARDEN

GLADE GARDEN INFILL

BUTTERFLY GARDEN INFILL

PRAIRIE GARDEN INFILL

HUMMINGBIRD GARDEN INFILL

NATIVE SHRUBS

EX. BENCH ON CONC. PAD

TRAP CHIP MULCH WITH BRICK EDGE

FINCH GARDEN INFILL

INTERPRETIVE SIGN

NATURAL LEDGROCK SLAB BENCH

PRAIRIE GARDEN EXPANSION

NATIVE SHRUBS

POTENTIAL FUTURE HOSE IRRIGATION LOCATION (HOSE BIB, BACKFLOW, ETC.)

EX. CELTIS OCCIDENTALIS

SAVANNA GARDEN INFILL

EX. CERCIS CANADENSIS

INTERPRETIVE SIGN

WOODLAND GARDEN INFILL

EX. ULMUS AMERICANA

TRAP CHIP MULCH WITH BRICK EDGE

OPEN WOODS GARDEN INFILL

EX. WOOD SIGN "SOUTHAMPTON NEIGHBORHOOD"

SUCCESSIONAL NATIVE TREE PLANTINGS

EDGE GARDEN INFILL

RAIN GARDEN INFILL

NATURAL LEDGROCK SLAB BENCH

NATIVE SHRUBS



TRAP CHIP GRAVEL PAVING



INTERPRETIVE SIGNAGE



NATURAL LEDGROCK SLAB BENCH

Southampton Marie's Wedge - Detail Planting Plan

Graphic Scale: 1" = 10'



Planting Legend

TREES

Code	Botanical	Common
QI	<i>Quercus imbricaria</i>	Shingle Oak

SHRUBS

Code	Botanical	Common
CA	<i>Amelanchier arborea</i>	Downy Serviceberry
CB	<i>Ceanothus americanus</i>	New Jersey Tea
HS	<i>Hamamelis vernalis</i>	Ozark Witchhazel
IR	<i>Ilex verticillata</i> 'Red Sprite'	Red Sprite Winterberry
IV	<i>Ilex verticillata</i> 'Jim Dandy'	Jim Dandy Winterberry

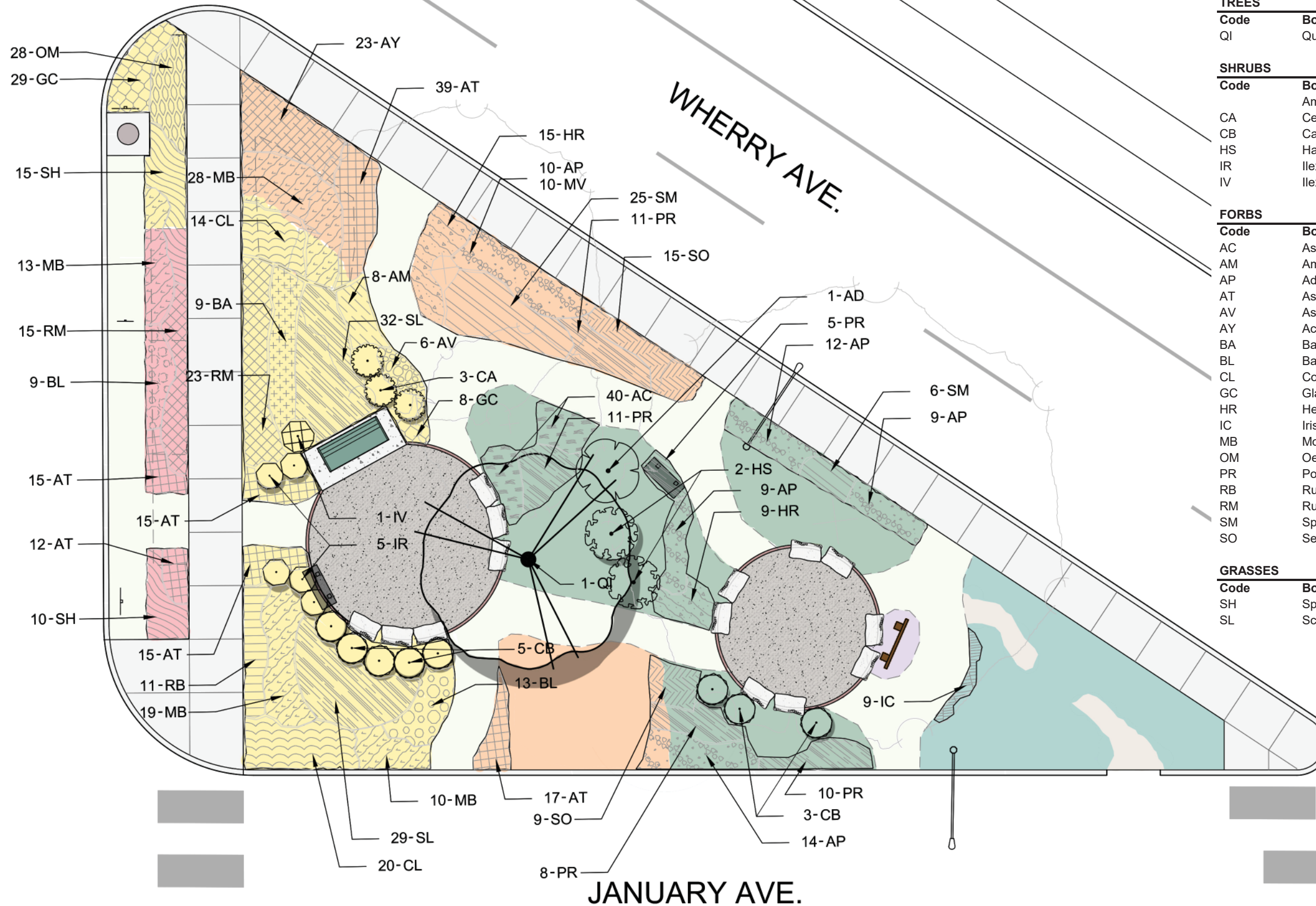
FORBS

Code	Botanical	Common
AC	<i>Asarum canadense</i>	Canadian Wild Ginger
AM	<i>Amsonia tabernaemontana</i>	Eastern Bluestar
AP	<i>Adiantum pedatum</i>	Maidenhair Fern
AT	<i>Asclepias tuberosa</i>	Butterfly Milkweed
AV	<i>Asclepias verticillata</i>	Whorled Milkweed
AY	<i>Achillea</i> x 'Moonshine'	Moonshine Yarrow
BA	<i>Baptisia australis</i>	Blue False Indigo
BL	<i>Baptisia alba</i>	Wild Indigo
CL	<i>Coreopsis lanceolata</i>	Lanceleaf Tickseed
GC	<i>Glandularia canadensis</i>	Rose Verbena
HR	<i>Heuchera richardsonii</i>	Alumroot
IC	<i>Iris cristata</i>	Crested Iris
MB	<i>Monarda bradburiana</i>	Eastern Bee Balm
OM	<i>Oenothera macrocarpa</i>	Missouri Primrose
PR	<i>Polemonium reptans</i>	Jacob's Ladder
RB	<i>Rudbeckia fulgida</i>	Orange Coneflower
RM	<i>Rudbeckia missouriensis</i>	Black Eyed Susan
SM	<i>Spigelia marilandica</i>	Indian Pink
SO	<i>Senecio obovatus</i>	Squaw-weed

GRASSES

Code	Botanical	Common
SH	<i>Sporobolus heterolepis</i>	Prairie Dropseed
SL	<i>Schizachyrium scoparium</i>	Little Bluestem Grass

ITASKA ST.



JANUARY AVE.

Southampton Marie's Wedge - Complete Build Cost Opinion

Landscape Design Cost Opinion

1 Hardscape

Item	Quantity	Unit	Unit Cost	Subtotal
Ledgerock Slab Bench - 18"W x 18"T x 36-48"L - Regionally So	8	ton	\$300.00	\$2,400.00
Trap Chip - 1/4" - 1/2" - Installed to 2" depth	3	cy	\$50.00	\$150.00
Limestone Screenings - 2" depth - compacted	3	cy	\$16.00	\$48.00
Quickrete Mortar Mix - 60lb sack - for setting brick edge	14	ea	\$5.00	\$70.00
Interpretive Signage - Graphics Panel Post Mounted	2	ea	\$1,000.00	\$2,000.00
Quickrete Fast Setting Conc. Mix - 50lb sack - for setting sign p	8	ea	\$5.00	\$40.00
Subtotal				\$4,708.00

2 Landscape

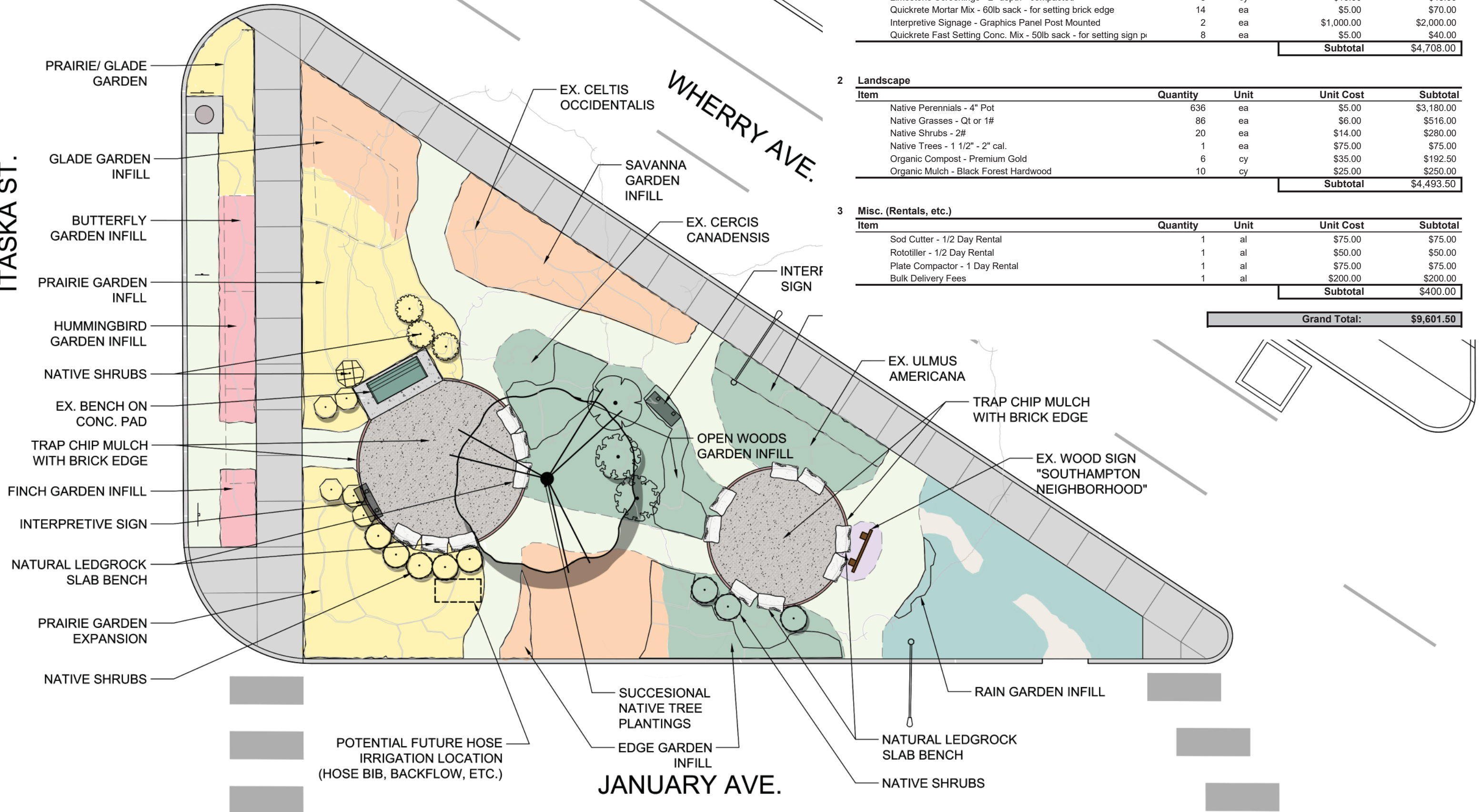
Item	Quantity	Unit	Unit Cost	Subtotal
Native Perennials - 4" Pot	636	ea	\$5.00	\$3,180.00
Native Grasses - Qt or 1#	86	ea	\$6.00	\$516.00
Native Shrubs - 2#	20	ea	\$14.00	\$280.00
Native Trees - 1 1/2" - 2" cal.	1	ea	\$75.00	\$75.00
Organic Compost - Premium Gold	6	cy	\$35.00	\$192.50
Organic Mulch - Black Forest Hardwood	10	cy	\$25.00	\$250.00
Subtotal				\$4,493.50

3 Misc. (Rentals, etc.)

Item	Quantity	Unit	Unit Cost	Subtotal
Sod Cutter - 1/2 Day Rental	1	al	\$75.00	\$75.00
Rototiller - 1/2 Day Rental	1	al	\$50.00	\$50.00
Plate Compactor - 1 Day Rental	1	al	\$75.00	\$75.00
Bulk Delivery Fees	1	al	\$200.00	\$200.00
Subtotal				\$400.00

Grand Total: \$9,601.50

ITASKA ST.



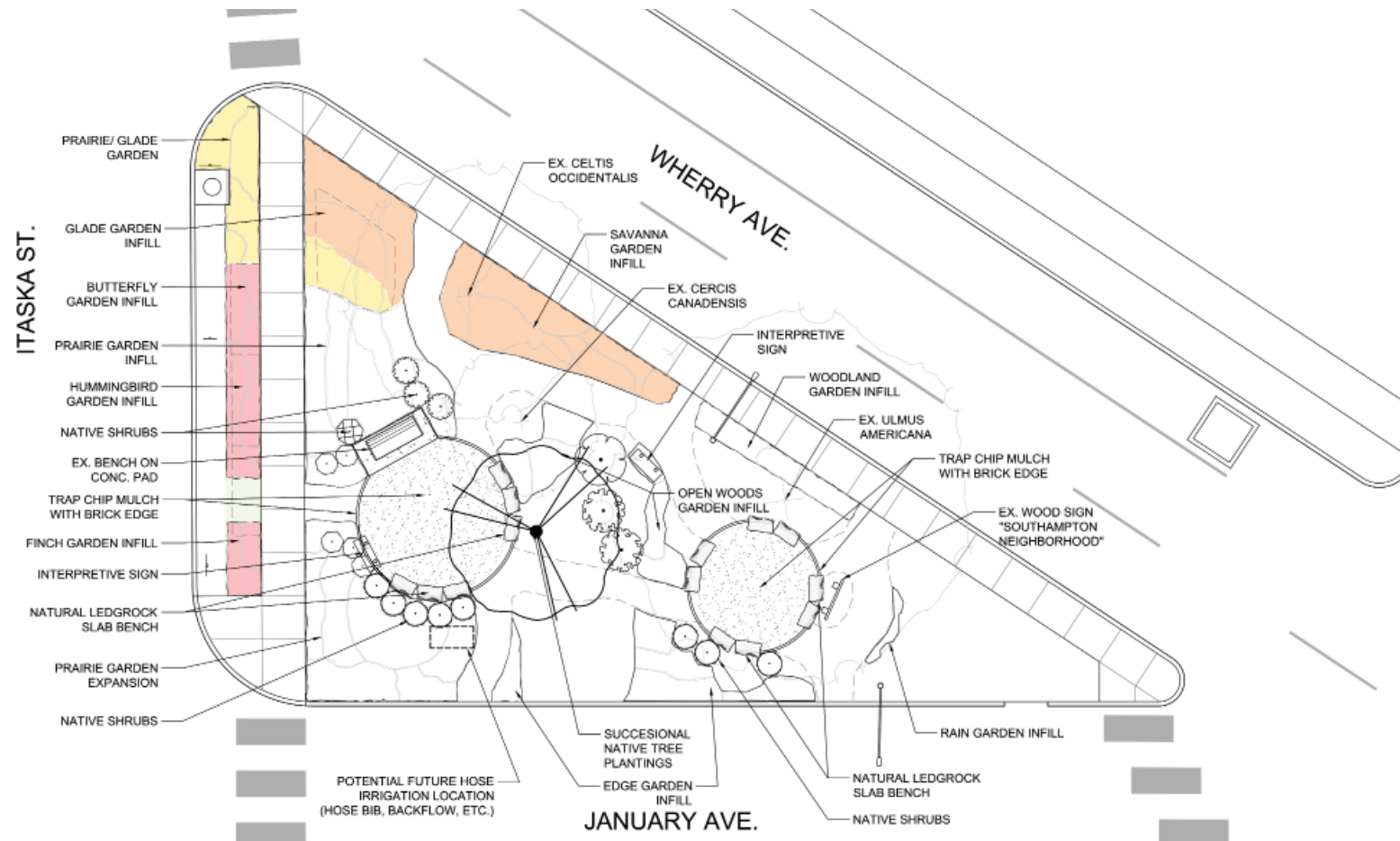
JANUARY AVE.

WHERRY AVE.

Southampton Marie's Wedge - Phase 1 Cost Opinion

Landscape Design Cost Opinion

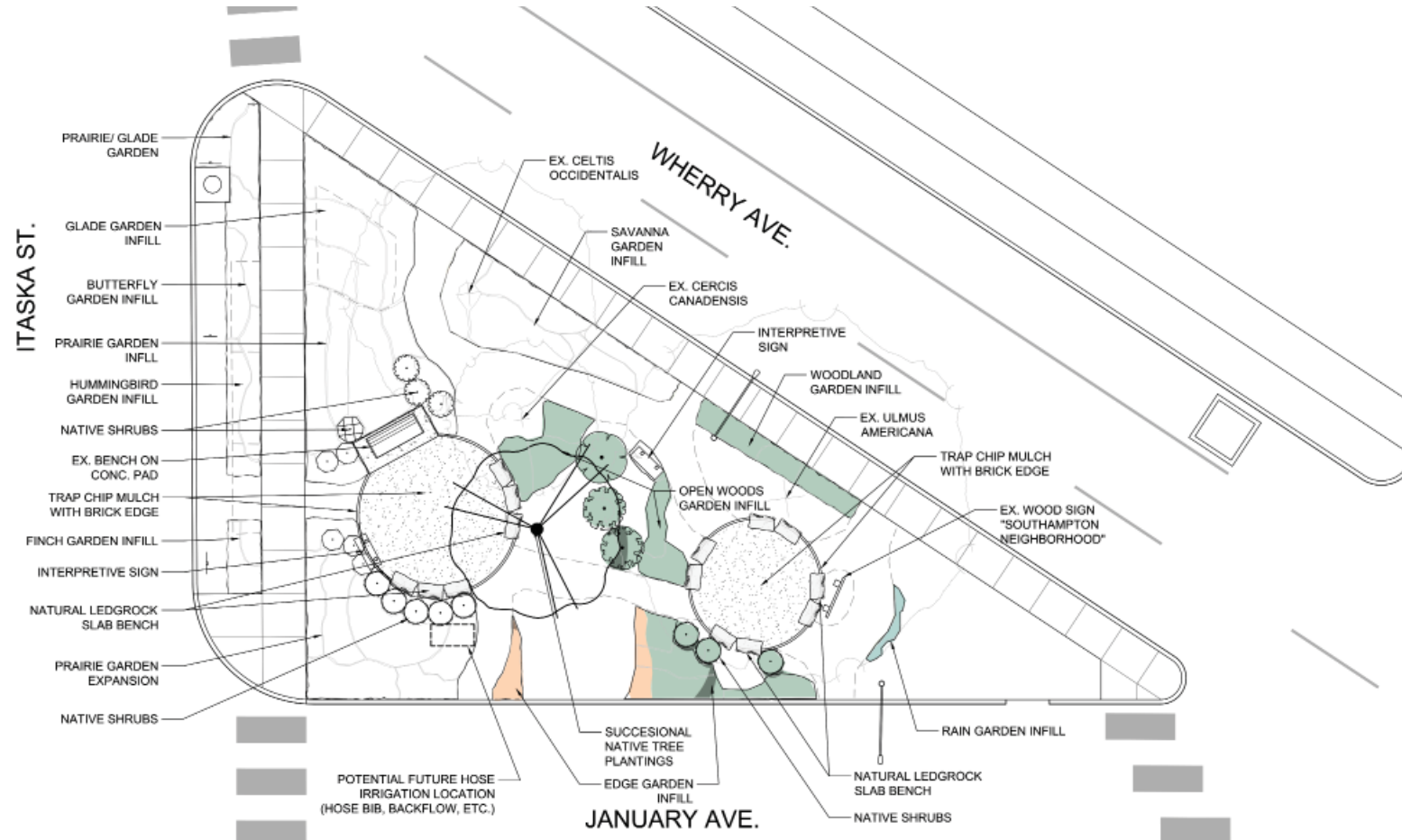
1 Hardscape				
Item	Quantity	Unit	Unit Cost	Subtotal
				Subtotal
				\$0.00
2 Landscape				
Item	Quantity	Unit	Unit Cost	Subtotal
Native Perennials - 4" Pot	311	ea	\$5.00	\$1,555.00
Native Grasses - Qt or 1#	25	ea	\$6.00	\$150.00
Organic Compost - Premium Gold	2	cy	\$35.00	\$70.00
Organic Mulch - Black Forest Hardwood	2	cy	\$25.00	\$50.00
				Subtotal
				\$1,825.00
3 Misc. (Rentals, etc.)				
Item	Quantity	Unit	Unit Cost	Subtotal
Sod Cutter - 1/2 Day Rental	1	al	\$75.00	\$75.00
Rototiller - 1/2 Day Rental	1	al	\$50.00	\$50.00
Bulk Delivery Fees	1	al	\$50.00	\$50.00
				Subtotal
				\$175.00
				Grand Total:
				\$2,000.00



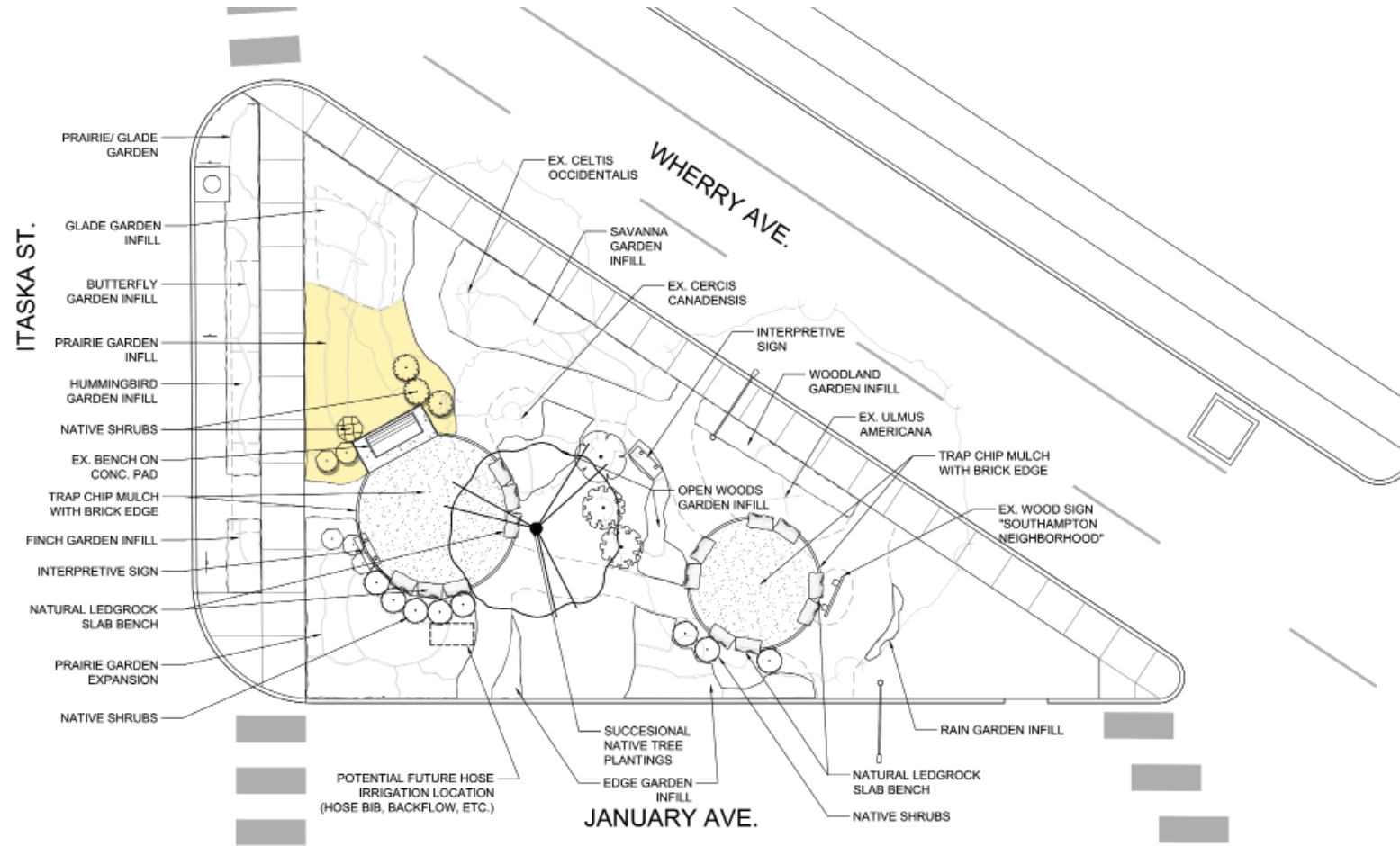
Southampton Marie's Wedge - Phase 2 Cost Opinion

Landscape Design Cost Opinion

1 Hardscape				
Item	Quantity	Unit	Unit Cost	Subtotal
				Subtotal
				\$0.00
2 Landscape				
Item	Quantity	Unit	Unit Cost	Subtotal
Native Perennials - 4" Pot	159	ea	\$5.00	\$795.00
Native Shrubs - 2#	6	ea	\$14.00	\$84.00
Organic Mulch - Black Forest Hardwood	3	cy	\$25.00	\$75.00
				Subtotal
				\$954.00
3 Misc. (Rentals, etc.)				
Item	Quantity	Unit	Unit Cost	Subtotal
Bulk Delivery Fees	1	al	\$100.00	\$100.00
				Subtotal
				\$100.00
				Grand Total:
				\$1,054.00



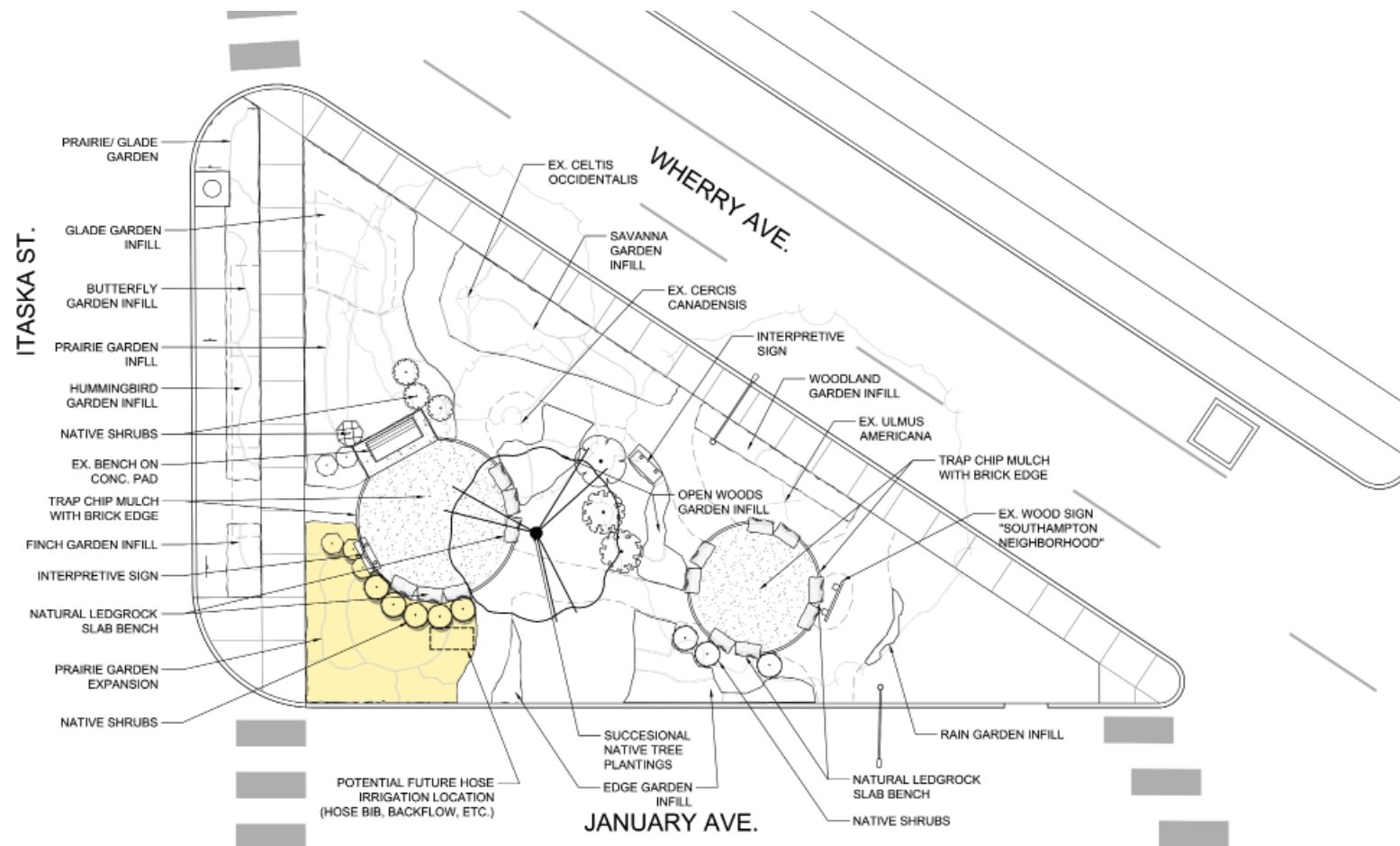
Southampton Marie's Wedge - Phase 3 Cost Opinion



Landscape Design Cost Opinion

1 Hardscape				
Item	Quantity	Unit	Unit Cost	Subtotal
Subtotal				\$0.00
2 Landscape				
Item	Quantity	Unit	Unit Cost	Subtotal
Native Perennials - 4" Pot	101	ea	\$5.00	\$505.00
Native Grasses - Qt or 1#	32	ea	\$6.00	\$192.00
Native Shrubs - 2#	6	ea	\$14.00	\$84.00
Organic Compost - Premium Gold - 2" Depth	2	cy	\$35.00	\$52.50
Organic Mulch - Black Forest Hardwood - 2" Depth	2	cy	\$25.00	\$37.50
Subtotal				\$871.00
3 Misc. (Rentals, etc.)				
Item	Quantity	Unit	Unit Cost	Subtotal
Sod Cutter - 1/2 Day Rental	1	al	\$75.00	\$75.00
Rototiller - 1/2 Day Rental	1	al	\$50.00	\$50.00
Bulk Delivery Fees	1	al	\$50.00	\$50.00
Subtotal				\$175.00
Grand Total:				\$1,046.00

Southampton Marie's Wedge - Phase 4 Cost Opinion



Landscape Design Cost Opinion

1 Hardscape				
Item	Quantity	Unit	Unit Cost	Subtotal
Subtotal				\$0.00
2 Landscape				
Item	Quantity	Unit	Unit Cost	Subtotal
Native Perennials - 4" Pot	88	ea	\$5.00	\$440.00
Native Grasses - Qt or 1#	29	ea	\$6.00	\$174.00
Native Shrubs - 2#	8	ea	\$14.00	\$112.00
Organic Compost - Premium Gold - 2" Depth	2	cy	\$35.00	\$70.00
Organic Mulch - Black Forest Hardwood - 2" Depth	2	cy	\$25.00	\$50.00
Subtotal				\$846.00
3 Misc. (Rentals, etc.)				
Item	Quantity	Unit	Unit Cost	Subtotal
Sod Cutter - 1/2 Day Rental	1	al	\$75.00	\$75.00
Rototiller - 1/2 Day Rental	1	al	\$50.00	\$50.00
Bulk Delivery Fees	1	al	\$50.00	\$50.00
Subtotal				\$175.00
Grand Total:				\$1,021.00

Southampton Marie's Wedge - Phase 5 Cost Opinion

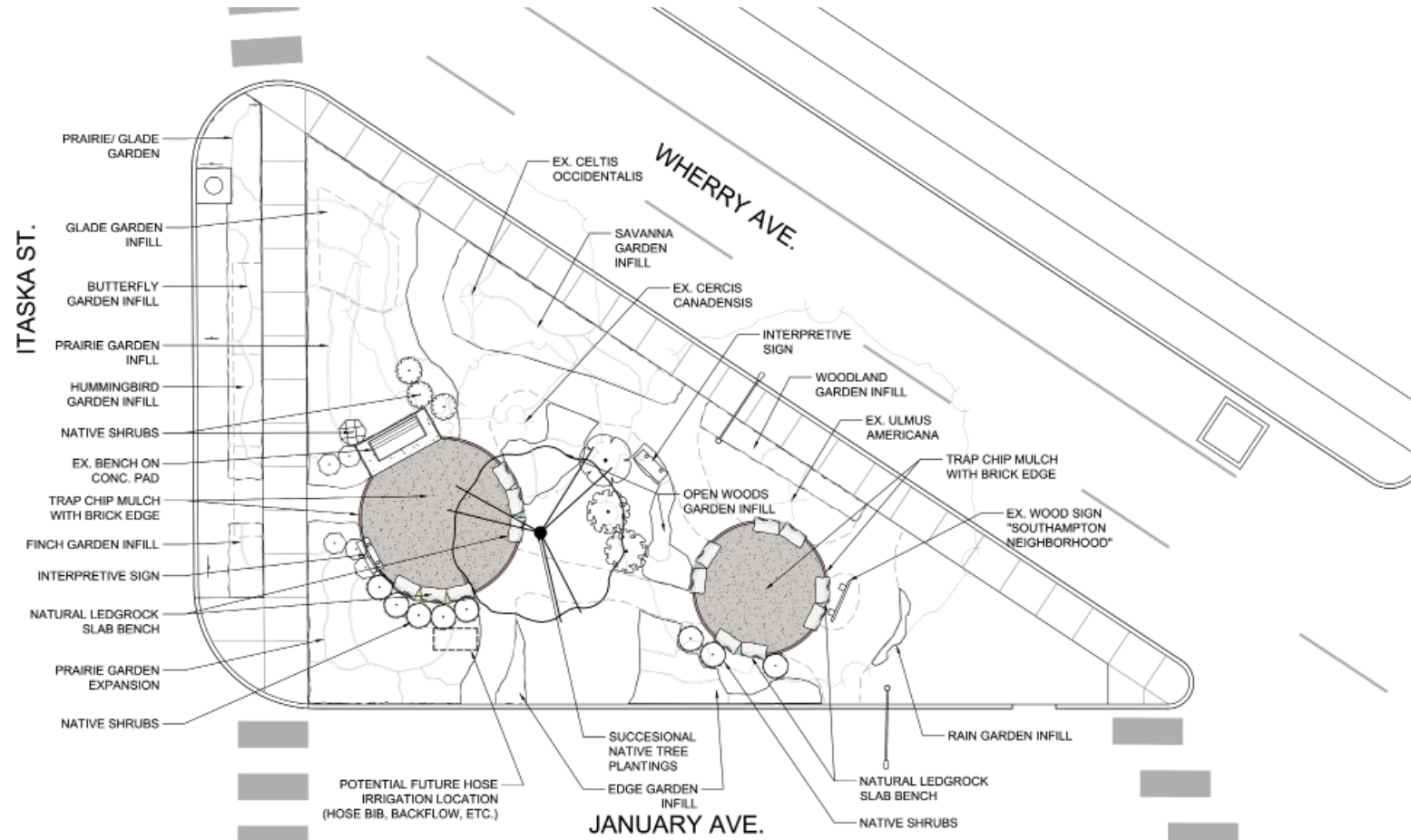
Landscape Design Cost Opinion

1 Hardscape				
Item	Quantity	Unit	Unit Cost	Subtotal
Ledgerock Slab Bench - 18"W x 18"T x 36-48"L - Regionally So	8	ton	\$300.00	\$2,400.00
Trap Chip - 1/4" - 1/2" - Installed to 2" depth	3	cy	\$50.00	\$150.00
Limestone Screenings - 2" depth - compacted	3	cy	\$16.00	\$48.00
Quickrete Mortar Mix - 60lb sack - for setting brick edge	14	ea	\$5.00	\$70.00
Subtotal				\$2,668.00

2 Landscape				
Item	Quantity	Unit	Unit Cost	Subtotal
Native Perennials - 4" Pot	25	ea	\$5.00	\$125.00
Native Grasses - Qt or 1#	15	ea	\$6.00	\$90.00
Native Trees - 1 1/2" - 2" cal.	1	ea	\$75.00	\$75.00
Organic Mulch - Black Forest Hardwood	1	cy	\$25.00	\$25.00
Subtotal				\$302.50

3 Misc. (Rentals, etc.)				
Item	Quantity	Unit	Unit Cost	Subtotal
Sod Cutter - 1/2 Day Rental	1	al	\$75.00	\$75.00
Plate Compactor - 1 Day Rental	1	al	\$75.00	\$75.00
Bulk Delivery Fees	1	al	\$100.00	\$100.00
Subtotal				\$250.00

Grand Total: \$3,220.50



Southampton Marie's Wedge - Phase 6 Cost Opinion

Landscape Design Cost Opinion

1 Hardscape				
Item	Quantity	Unit	Unit Cost	Subtotal
Interpretive Signage - Graphics Panel Post Mounted	2	ea	\$1,000.00	\$2,000.00
Quickrete Fast Setting Conc. Mix - 50lb sack - for setting sign p	8	ea	\$5.00	\$40.00
Subtotal				\$2,040.00

2 Landscape				
Item	Quantity	Unit	Unit Cost	Subtotal
Native Perennials - 4" Pot	20	ea	\$5.00	\$100.00
Native Shrubs - 2#	3	ea	\$14.00	\$42.00
Organic Mulch - Black Forest Hardwood	0.5	cy	\$25.00	\$12.50
Subtotal				\$154.50

3 Misc. (Rentals, etc.)				
Item	Quantity	Unit	Unit Cost	Subtotal
Subtotal				\$0.00

Grand Total: \$2,194.50

